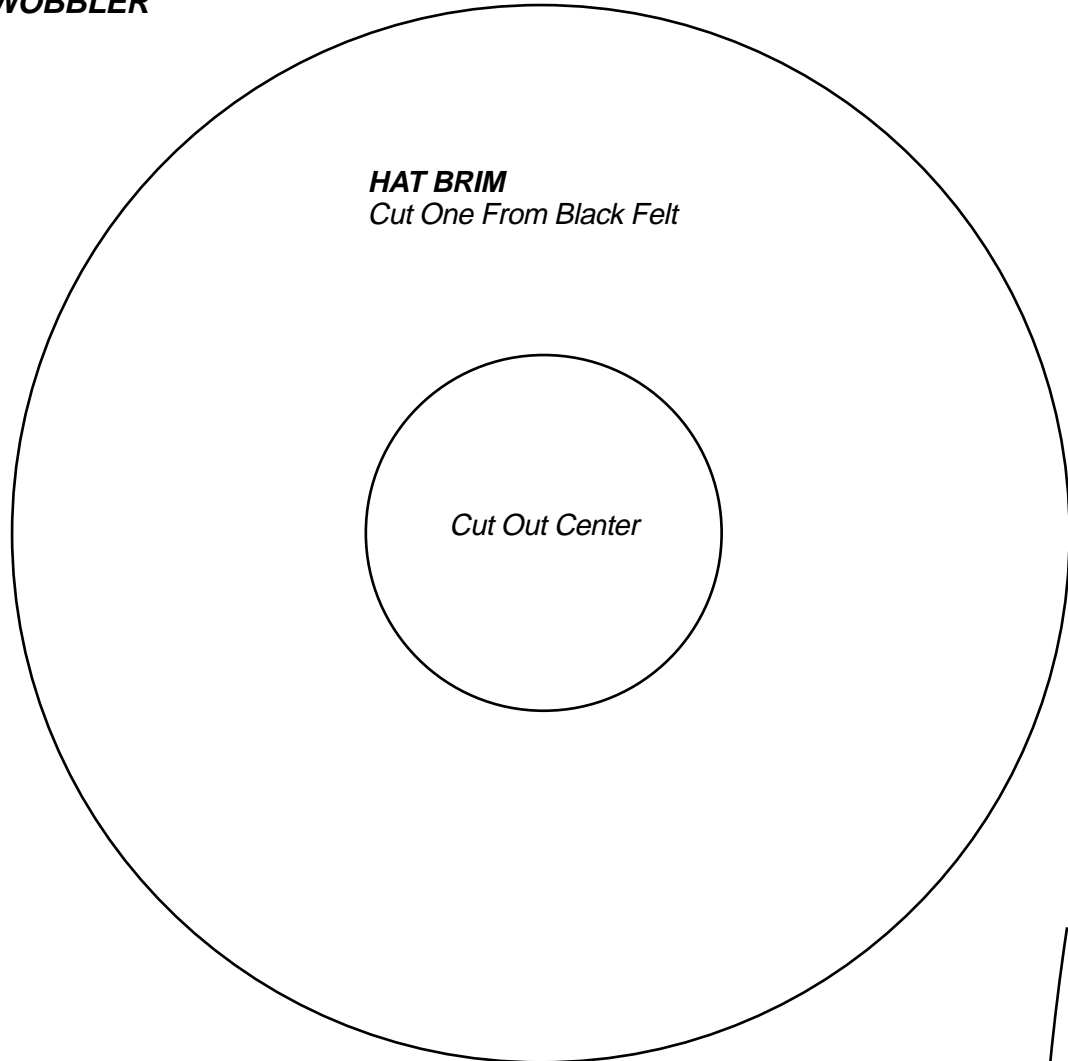
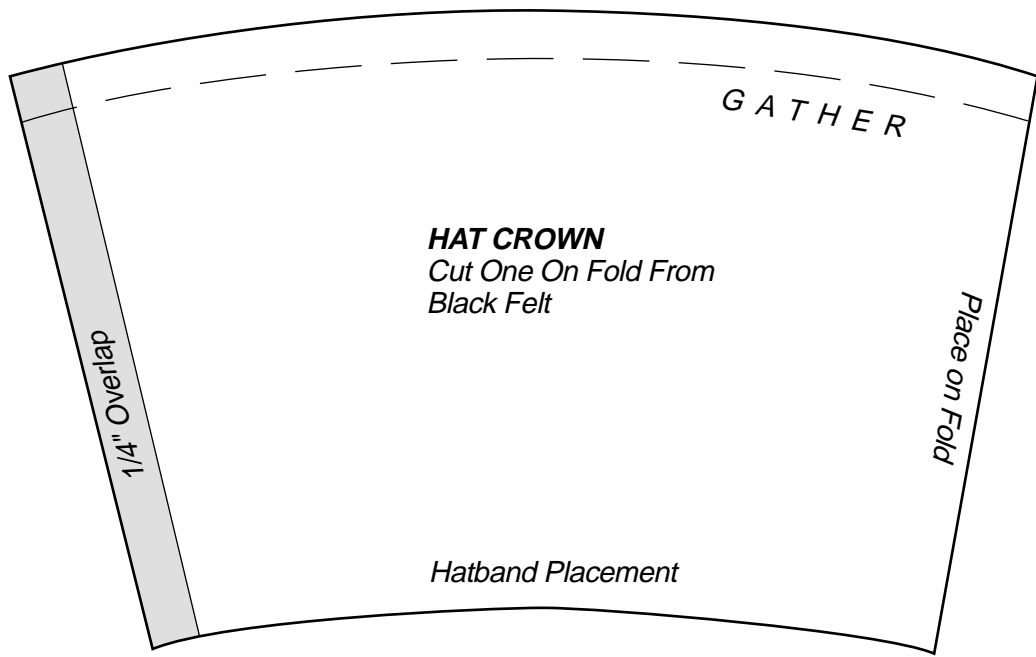


"SNOWMAN WOBLER"



HAT BRIM
Cut One From Black Felt

Cut Out Center



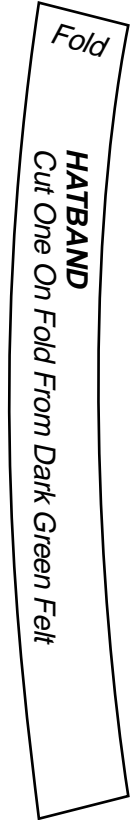
HAT CROWN
Cut One On Fold From
Black Felt

GATHER

1/4" Overlap

Place on Fold

Hatband Placement

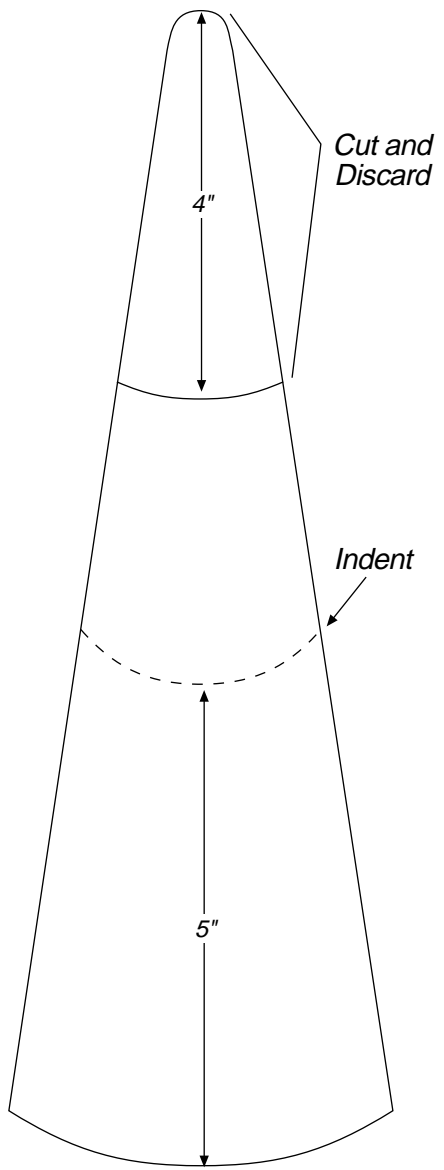


Fold

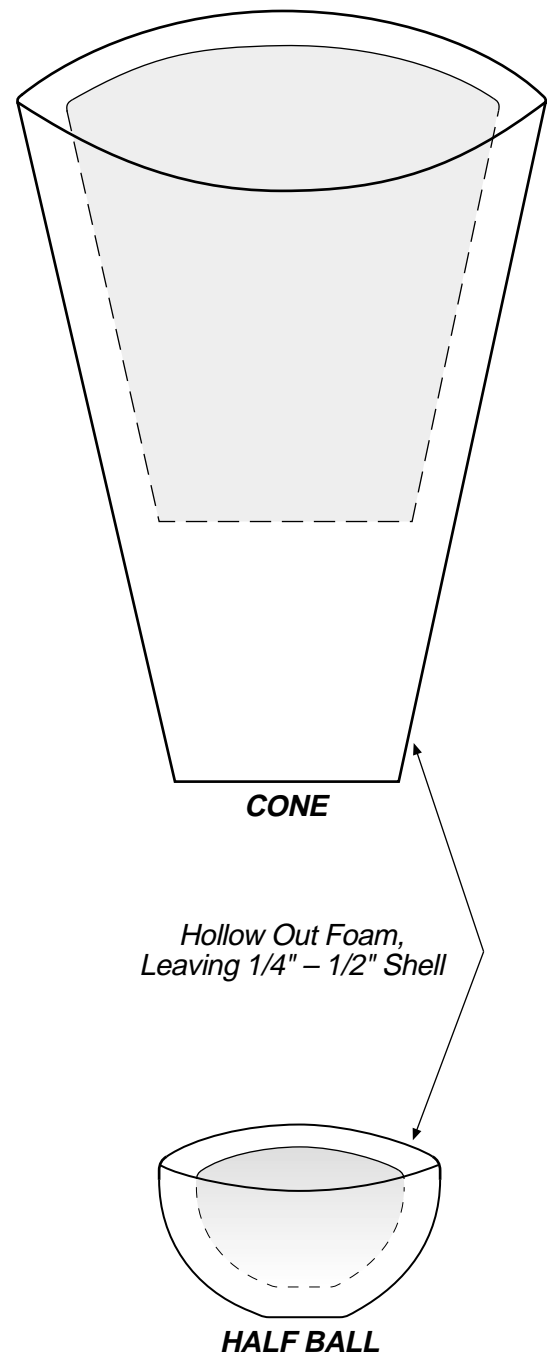
HATBAND
Cut One On Fold From Dark Green Felt

"SNOWMAN WOBBLER"

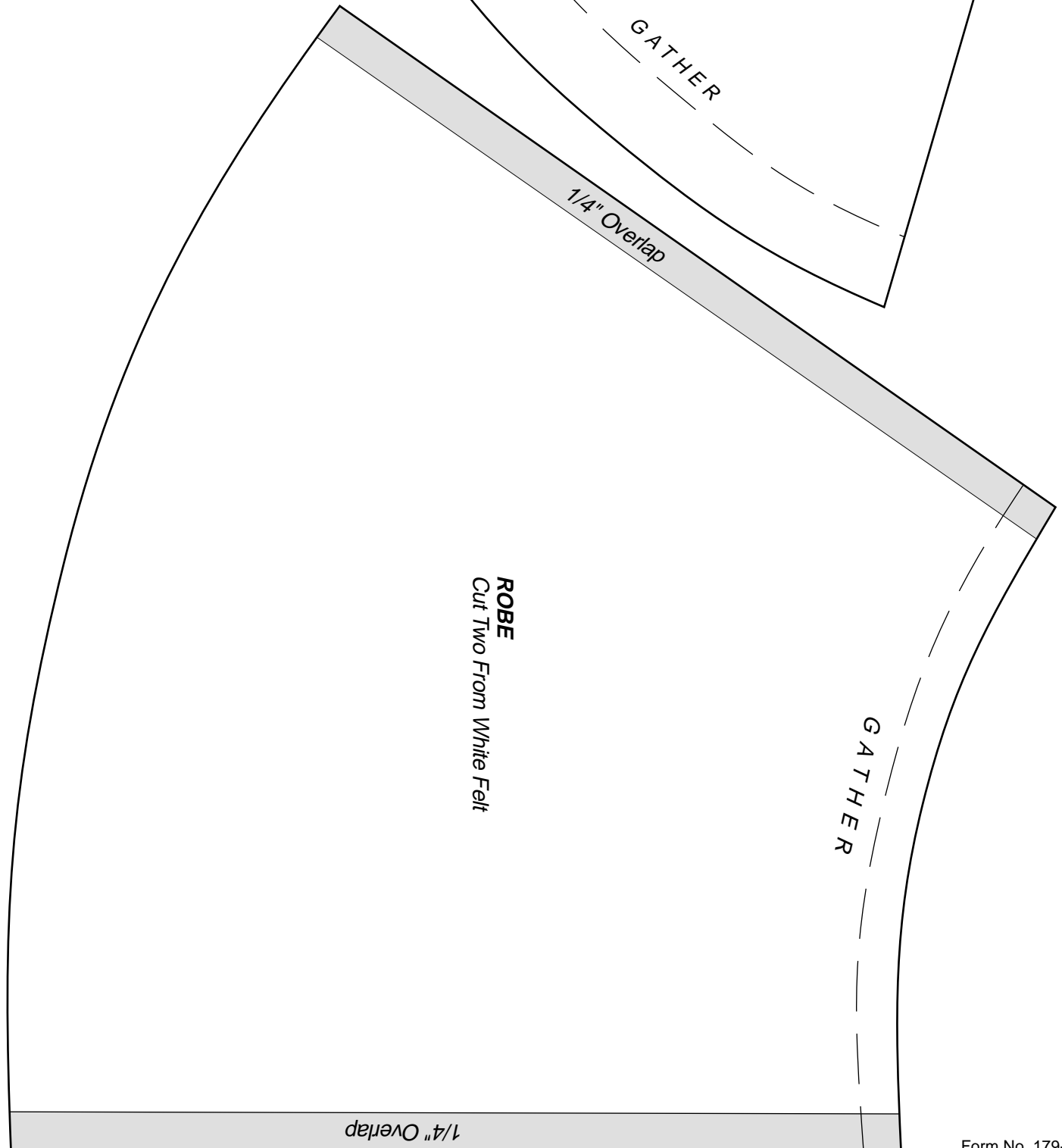
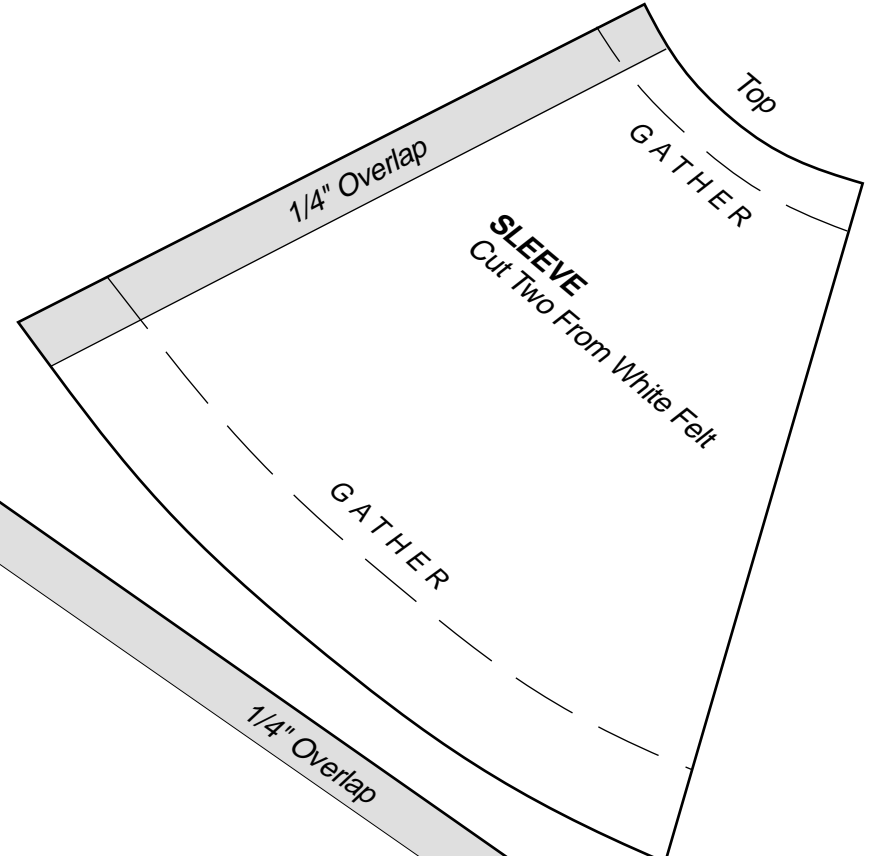
STEP 2 DIAGRAM



STEP 3 DIAGRAM

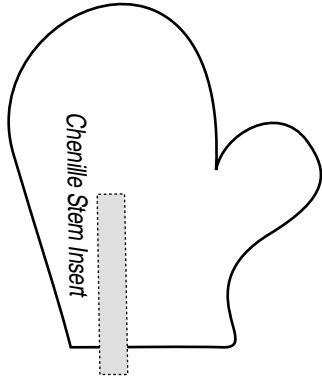


"SNOWMAN WOBBLER"



"SNOWMAN WOBBLER"

MITTEN
Cut Two From Doubled
Dark Green Felt



SCARF TAIL
Cut Two From
Dark Green Felt

